



C10460

Specifically dedicated for PSD module

The C10460 is a signal processing unit specifically design to convert the output from a PSD module C10443 series (except for the C10443-06) into position signals.

Position signals are output as both analog and digital signals. In case of analog output, connecting the output connector to a voltmeter shows an output voltage that directly represents the position information (The output voltage indicates a position from the center of the PSD, 1 V=1 mm). While, digital output allows serial connection (RS-232C) to a PC. Position information can be easily loaded into a PC via the sample software that comes with the unit.

Features

- **Both analog and digital outputs**
Analog output: Output voltage directly represents the position information.
Digital output: High-resolution digital output (16-bit)
- **AC adapter (+12 V) operation**
- **Supplies power to PSD modules**

Applications

- **Optical axis alignment**
- **Range finder**
- **Two-dimensional measurement**
- **Three-dimensional measurement**
- **Length measurement**
- **Liquid level sensors**
- **Distortion measurement**
- **Displacement sensors**

Absolute maximum ratings (Ta=25 °C unless otherwise noted)

Parameter	Symbol	Condition	Value	Unit
Supply voltage	Vs max		+18	V
Input voltage	Vin max		±12	V
Operating temperature	Topr	No dew condensation*1	0 to +40	°C
Storage temperature	Tstg	No dew condensation*1	-10 to +60	°C

*1: When there is a temperature difference between a product and the surrounding area in high humidity environment, dew condensation may occur on the product surface. Dew condensation on the product may cause deterioration in characteristics and reliability.

Note: Exceeding the absolute maximum ratings even momentarily may cause a drop in product quality. Always be sure to use the product within the absolute maximum ratings.

Electrical characteristics (Ta=25 °C, Vs=+12 V, unless otherwise noted)

Parameter	Symbol	Condition	Min.	Typ.	Max.	Unit
Supply voltage	Vs	*2	+9	+12	+18	V
Input voltage	Vin		-10.9	-	0	V
Current consumption	Is	*2	-	200	-	mA

*2: Be sure to use the supplied AC adapter.

■ Analog section

Parameter	Symbol	Condition	Min.	Typ.	Max.	Unit	
Maximum output amplitude voltage	Vfs	*3	-	-	±10	V	
Output noise voltage	Vn	*4	-	5	-	mVp-p	
Output offset voltage	Vos	*4	-10	-	+10	mV	
Position detection error	E		-	±3	-	%	
Cutoff frequency	fc	-3 dB	Lower	-	DC	-	kHz
			Upper	-	13.5	-	
Position resolution	ΔR	*5	-	5	-	μm	

*3: Vfs can be changed by using the range selector switch on the front panel of the unit.

*4: Measured when pseudo signal Vin (VX1=VX2=VY1=VY2=-2 V) is input in place of PSD module output voltage.

*5: Reference value. Values may vary depending on operating environment.

■ Digital section

Parameter	Symbol	Condition	Min.	Typ.	Max.	Unit
Digital output form	-	-	Conforms to RS-232C, 16-bit (outputs position signals X, Y, and light level monitor Σ)			-
Signal conversion time	-	Mode: 2 ms*6	2	-	-	ms
		Mode: 5 ms*7	5	-	-	

*6: Communication parameter 115200 bps/8-bit/Non-parity/1 stop bit

*7: Communication parameter 38400 bps/8-bit/Non-parity/1 stop bit

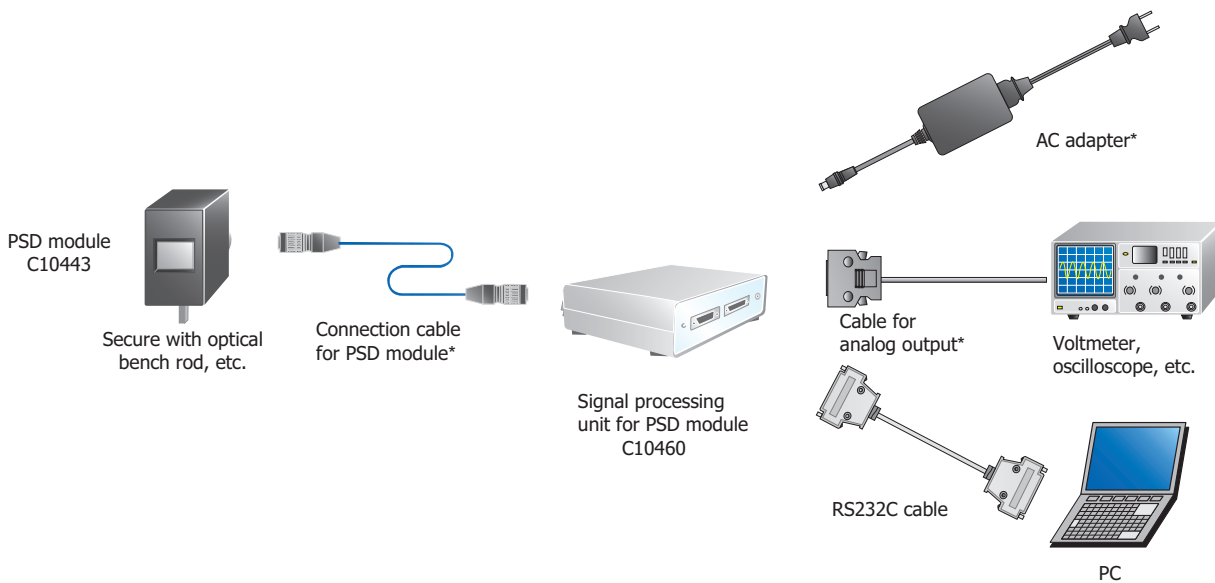
■ Applicable PSD modules

- C10443-01
- C10443-02
- C10443-03
- C10443-04*8

Note: The C10443-06 is not supported.

*8: When used in combination with C10460, the cutoff frequency is 13.5 kHz.

■ Connection example



* Accessories of C10460

KACCC0349EC

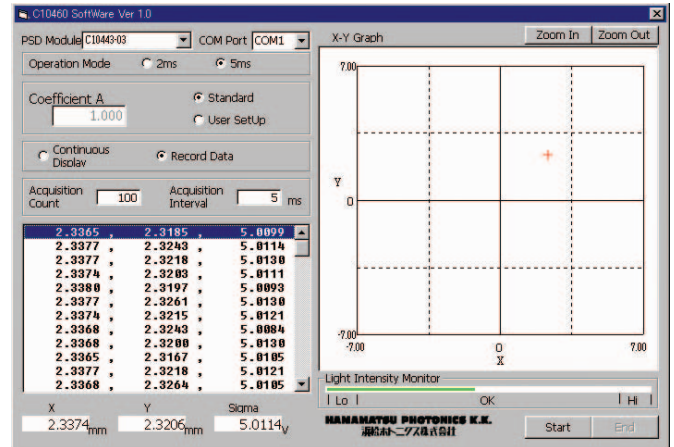
Sample software (accessory)

Sample software acquires and displays position data as numerical values and on an XY graph, as well as recording the data.

- Acquisition count: 1 to 300000
- Acquisition interval
 - Mode 1: 2 ms to 120000 ms (in 2 ms intervals)
 - Mode 2: 5 ms to 300000 ms (in 5 ms intervals)

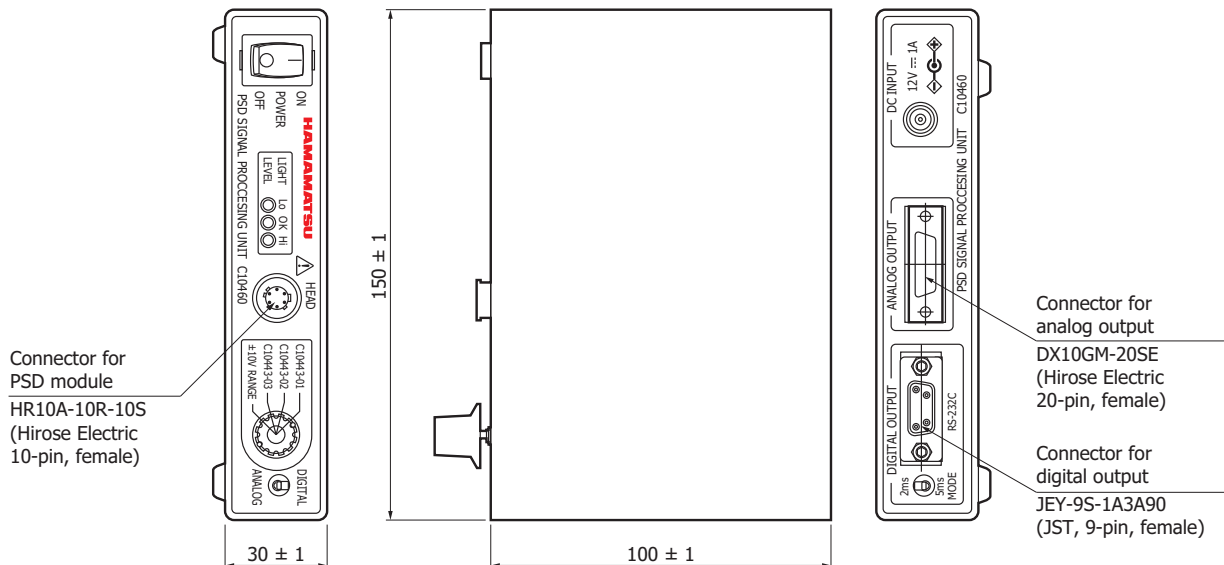
Compatible OS:

- Microsoft® Windows® 7 Professional SP1 (32/64-bit)
- Microsoft Windows 8 Professional (32/64-bit)
- Microsoft Windows 10 Professional (32-bit, 64-bit)



Note: Microsoft Windows is either registered trademarks or trademarks of Microsoft Corporation in the United States and/or other countries.

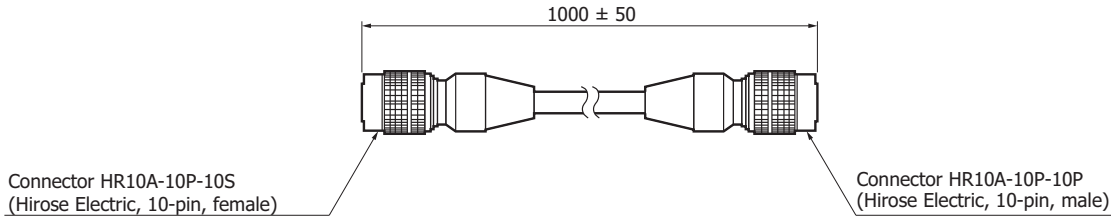
Dimensional outline (unit: mm)



KACCA0195EE

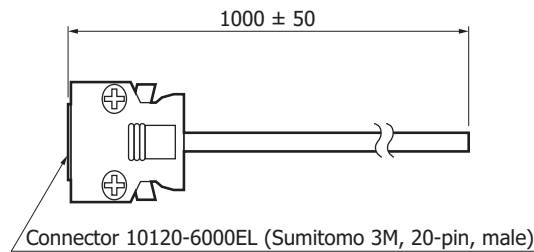
Accessories (unit: mm)

- Instruction manual
- Sample software CD-ROM
- AC adapter
- Cable for PSD module



KACCA01961A

- Cable for analog output (no connector on one end)



KACCA01973A

Note: RS232C cable is not supplied with C10460. Use a commercially available cable with 9-pin D-sub connectors. (male - female, straight)

Related information

www.hamamatsu.com/sp/ssd/doc_en.html

- Precautions
- Disclaimer

Information described in this material is current as of September 2019.

Product specifications are subject to change without prior notice due to improvements or other reasons. This document has been carefully prepared and the information contained is believed to be accurate. In rare cases, however, there may be inaccuracies such as text errors. Before using these products, always contact us for the delivery specification sheet to check the latest specifications.

The product warranty is valid for one year after delivery and is limited to product repair or replacement for defects discovered and reported to us within that one year period. However, even if within the warranty period we accept absolutely no liability for any loss caused by natural disasters or improper product use. Copying or reprinting the contents described in this material in whole or in part is prohibited without our prior permission.

HAMAMATSU

www.hamamatsu.com

HAMAMATSU PHOTONICS K.K., Solid State Division

1126-1 Ichino-cho, Higashi-ku, Hamamatsu City, 435-8558 Japan, Telephone: (81)53-434-3311, Fax: (81)53-434-5184

U.S.A.: Hamamatsu Corporation: 360 Foothill Road, Bridgewater, N.J. 08807, U.S.A., Telephone: (1)908-231-0960, Fax: (1)908-231-1218, E-mail: usa@hamamatsu.com

Germany: Hamamatsu Photonics Deutschland GmbH: Arzbergerstr. 10, D-82211 Herrsching am Ammersee, Germany, Telephone: (49)8152-375-0, Fax: (49)8152-265-8, E-mail: info@hamamatsu.de

France: Hamamatsu Photonics France S.A.R.L.: 19, Rue du Saule Trapu, Parc du Moulin de Massy, 91882 Massy Cedex, France, Telephone: (33)1 69 53 71 00, Fax: (33)1 69 53 71 10, E-mail: infos@hamamatsu.fr

United Kingdom: Hamamatsu Photonics UK Limited: 2 Howard Court, 10 Tewin Road, Welwyn Garden City, Hertfordshire AL7 1BW, United Kingdom, Telephone: (44)1707-294888, Fax: (44)1707-325777, E-mail: info@hamamatsu.co.uk

North Europe: Hamamatsu Photonics Norden AB: Torshamnsgatan 35 16440 Kista, Sweden, Telephone: (46)8-509 031 00, Fax: (46)8-509 031 01, E-mail: info@hamamatsu.se

Italy: Hamamatsu Photonics Italia S.r.l.: Strada della Moia, 1 int. 6, 20020 Arese (Milano), Italy, Telephone: (39)02-93 58 17 33, Fax: (39)02-93 58 17 41, E-mail: info@hamamatsu.it

China: Hamamatsu Photonics (China) Co., Ltd.: B1201, Jiaming Center, No.27 Dongsanhuan Beilu, Chaoyang District, 100020 Beijing, P.R.China, Telephone: (86)10-6586-6006, Fax: (86)10-6586-2866, E-mail: hpc@hamamatsu.com.cn

Taiwan: Hamamatsu Photonics Taiwan Co., Ltd.: 8F-3, No. 158, Section2, Gongdao 5th Road, East District, Hsinchu, 300, Taiwan R.O.C. Telephone: (886)3-659-0080, Fax: (886)3-659-0081, E-mail: info@hamamatsu.com.tw